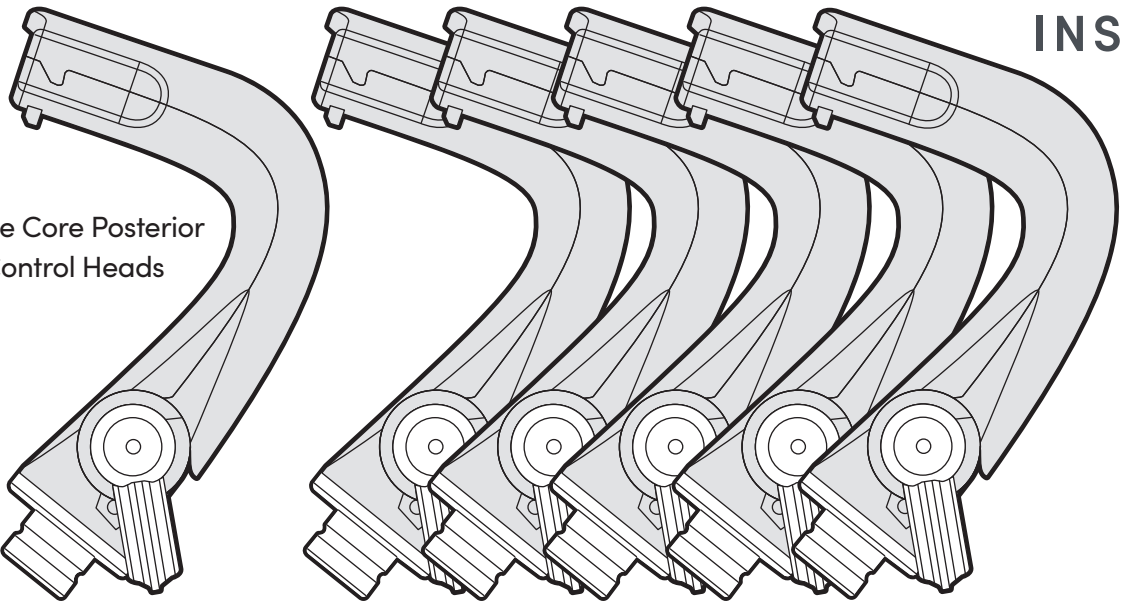


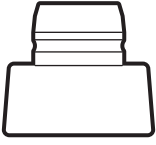
Isolite Core Posterior  
Control Heads



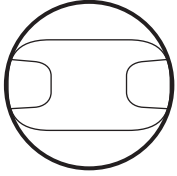
Maintenance Kit with  
Lubricant and O-rings



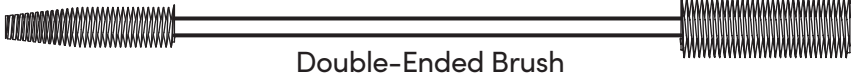
A-dec  
Connector



Pelton & Crane  
Connector



Suction  
Line Plug



Double-Ended Brush

isolite®  
core+ posterior

Control Head for  
Isolite Posterior Mouthpieces

Zyris Isolite Posterior Mouthpieces Sold Separately

**P**

**XS**

**S**

**M**

**MDV**

**L**

**P**

**XS**

**S**

**M**

**MDV**

**L**

**Pediatric**  
REF CIL0501  
Bite Block 25 mm

**Extra Small**  
REF CIL1101  
Bite Block 25 mm

**Small**  
REF CIL0601  
Bite Block 28 mm

**Medium**  
REF CIL0701  
Bite Block 30 mm

**Medium DV**  
REF CIL0801  
Bite Block 30 mm

**Large**  
REF CIL0901  
Bite Block 33 mm

Cheek Shield

Flexible Isthmus

Dual Vacuum Channels

Illumination Path

Tongue and Throat Shield

Integrated Bite Block with Rear Evacuation Channel

VALIDATED AUTOCLAVE CYCLES

Cycle	Temperature	Minimum Exposure Time	Minimum Drying Time
Standard	132 °C / 270 °F	15 min	15 min
Prevacuum	132 °C / 270 °F	4 min	20 min
Prevacuum	134 °C / 273 °F	3 min	20 min

CONTRAINDICATIONS

No known contraindications. Do not use without reviewing how to select the correct Zyris Isolite® Posterior Mouthpiece size for each patient. Do not use if unable to position the mouthpiece correctly.

SIDE EFFECTS

Use of the Mouthpiece may trigger a pharyngeal reflex (laryngeal spasm) in hypersensitive patients, or if it is not placed correctly within the oral cavity. Contact Zyris for additional placement information if needed.

WARNINGS

- WARNING:** Zyris Isolite® Mouthpieces are single-use only. Reuse can result in the transmission of infectious pathogens. Mouthpieces must be discarded after use.
- Mouthpieces cannot be safely sterilized after use.

WARNINGS

- WARNING:** Be sure to use established protocols and patient monitoring when using our mouthpieces in conjunction with sedation dentistry. Patient management by a certified anesthesiologist is strongly recommended.

PRECAUTIONS

- CAUTION:** When performing dental procedures requiring high levels of blood evacuation, it is recommended that the Mouthpiece be intermittently flushed with water to prevent coagulation in the Mouthpiece to avoid loss of suction.
- CAUTION:** Do not autoclave the Control Head at temperatures above 135 °C; higher temperatures could damage components and void your product warranty.
- CAUTION:** Failure to maintain properly lubricated o-rings can result in damage to the Zyris Isolite Core device that is not covered by product warranty.
- CAUTION:** With regular use, cleaning, and maintenance, the device is designed to last for years. Check the device for wear prior to use to make sure that it is adequate for use.

Video instructions can be found at:



<https://zyr.is/pch>



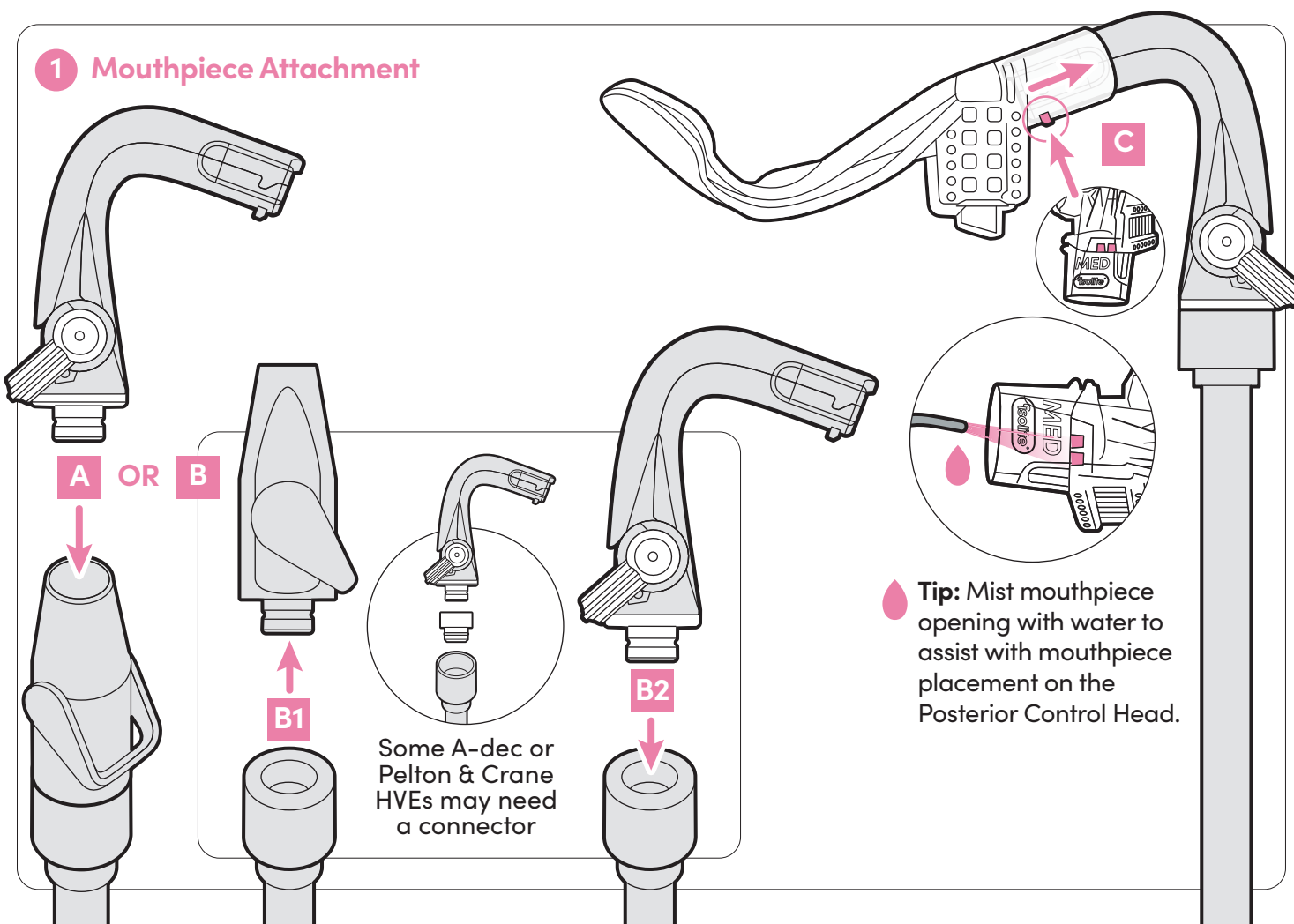
PAP  
recyclable paperboard

Limited 1-Year Warranty  
<https://www.zyris.com/warranty>

ZYRIS®

6868A Cortona Dr  
Santa Barbara, CA 93117  
(805) 560-9888

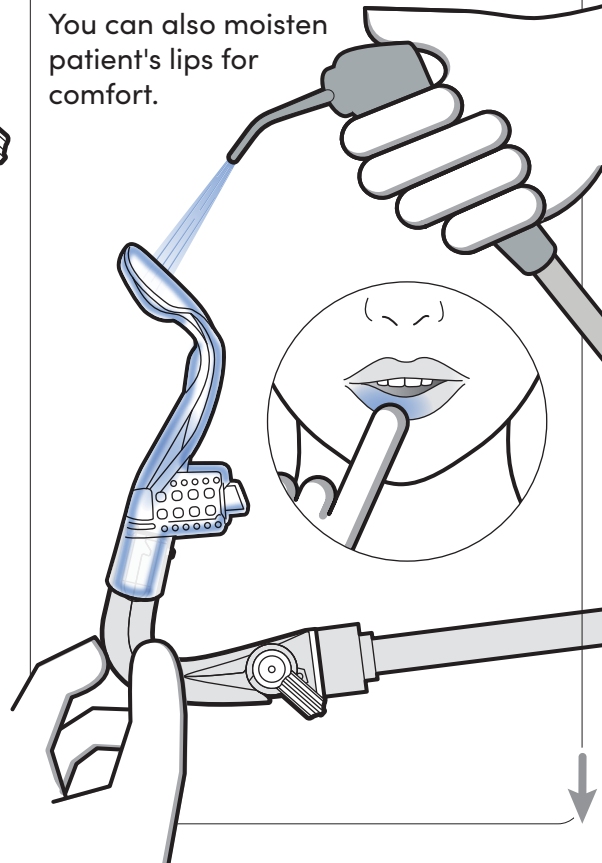
## 1 Mouthpiece Attachment



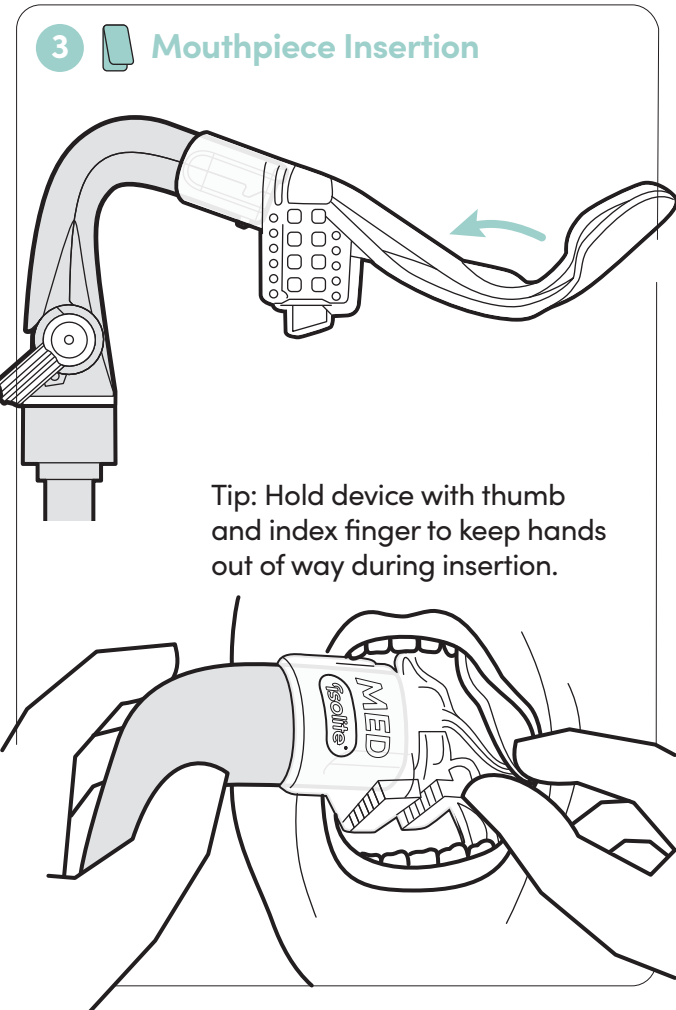
## 2 Mouthpiece Preparation

Mist water on the back side of mouthpiece before insertion.

You can also moisten patient's lips for comfort.

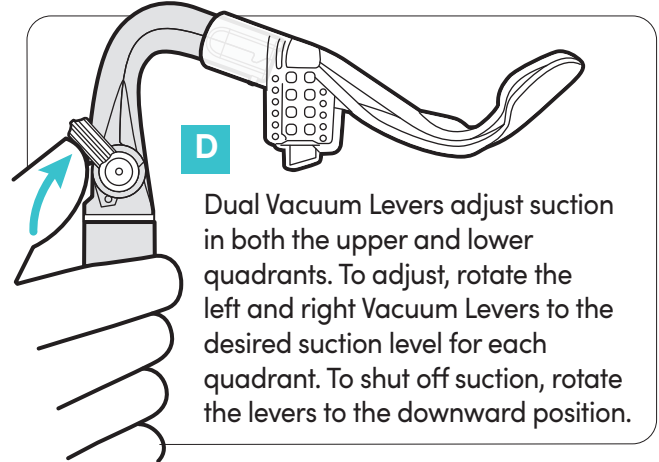
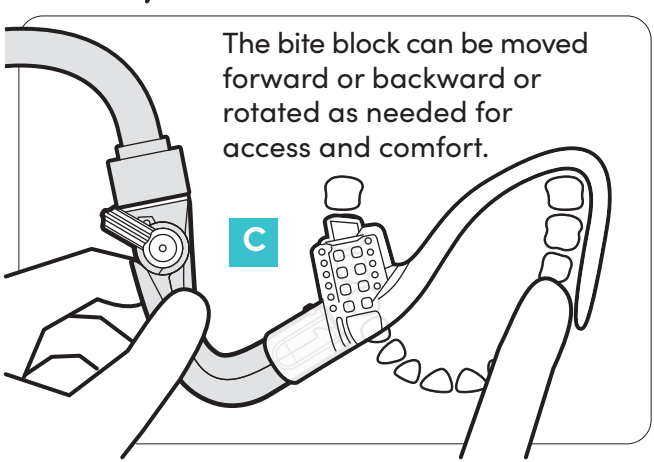
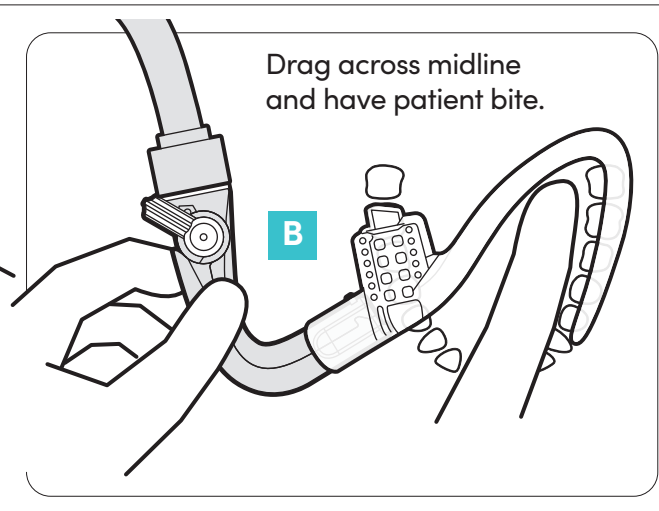
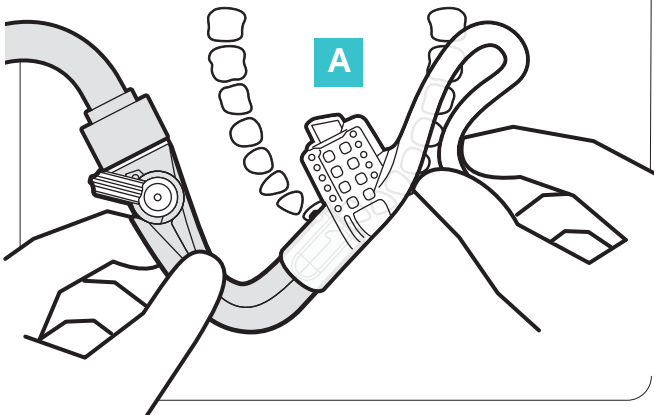


## 3 Mouthpiece Insertion

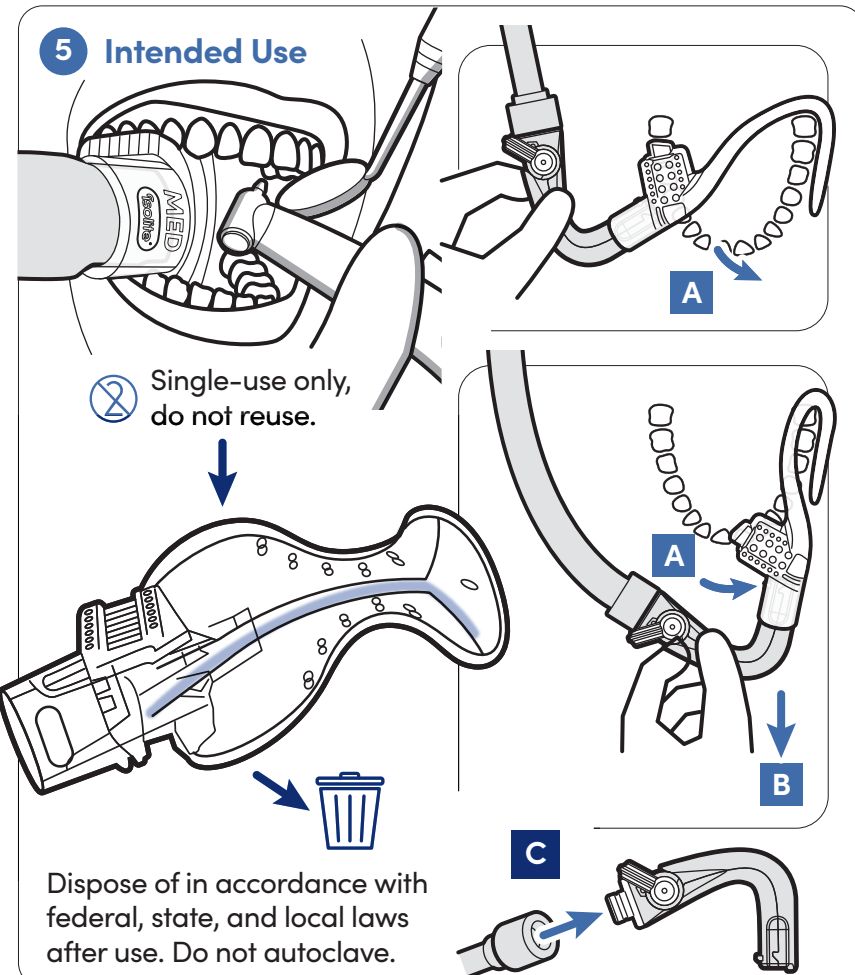


## 4 Mouthpiece Insertion

Insert into cheek.



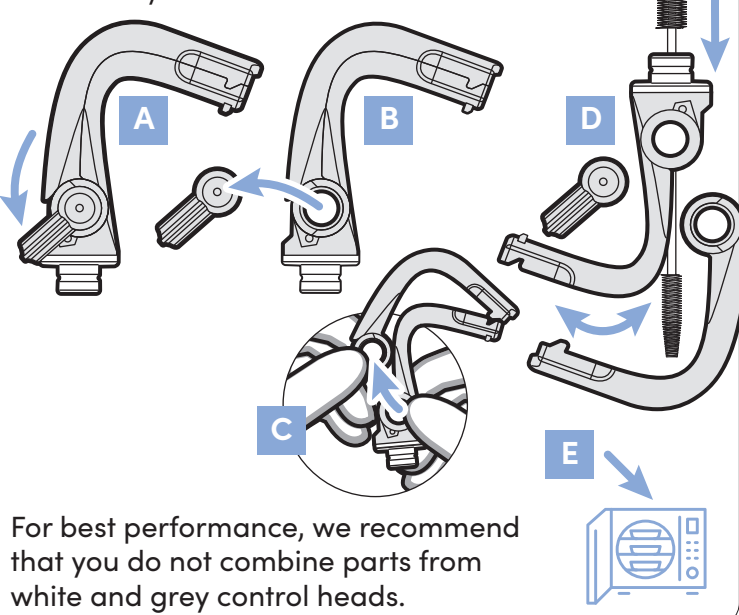
## 5 Intended Use



## 6 Cleaning and Disinfection

### Cleaning and Disinfection of Posterior Control Head

Zyris recommends cleaning and autoclaving the Posterior Control Head after each patient use. To clean the Posterior Control Head, remove levers and separate (A, B, C). Use brush with a pH neutral enzymatic cleaning solution to remove all visible biomatter (D). Rinse with water and place components in an autoclave pouch. Use validated autoclave cycles.



## Periodic Maintenance

When levers become tight, apply provided lubricant to vacuum lever o-rings.

