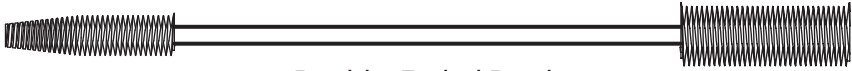


Isolite Core
Anterior Adapters

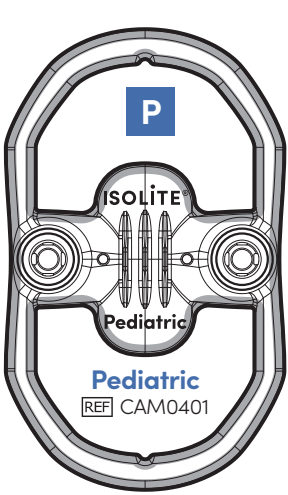


Double-Ended Brush

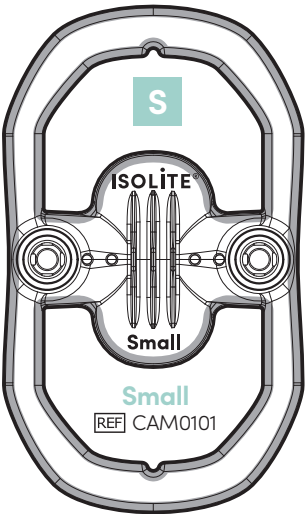
isolite®
core anterior

Adapter for
Isolite Anterior Mouthpieces

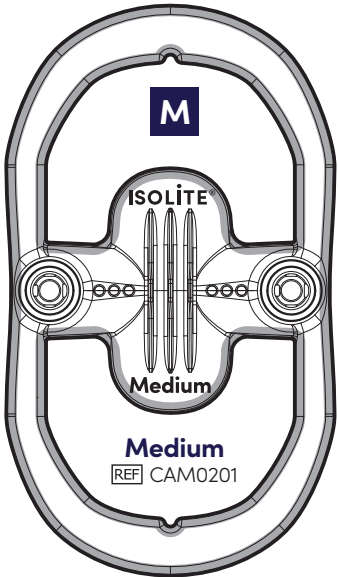
Zyris Isolite® Anterior Mouthpieces (Sold Separately)



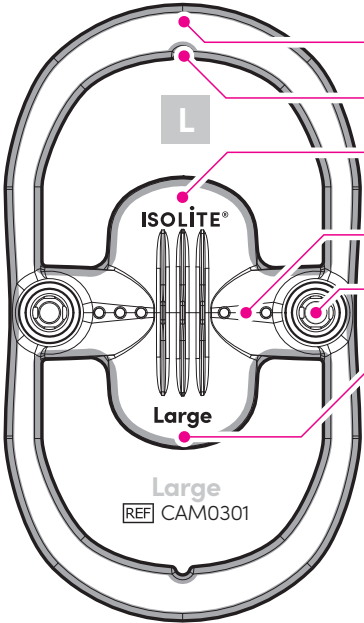
Young children (2-7) and
adults with very small arches
or limited lip elasticity



Children and adults with
narrow or V-shaped arches



Larger children and adults with
average or U-shaped arches



Adults with very wide arches

VALIDATED AUTOCLAVE CYCLES

Cycle	Temperature	Minimum Exposure Time	Minimum Drying Time
Standard	121 °C / 250 °F	30 min	30 min
Standard	126 °C / 259 °F	10 min	30 min
Standard	132 °C / 270 °F	15 min	15 min
Prevacuum	132 °C / 270 °F	4 min	20 min
Prevacuum	134 °C / 273 °F	3 min	20 min

CONTRAINDICATIONS

No known contraindications. Do not use without reviewing how to select the correct Zyris Isolite® Anterior Mouthpiece size for each patient. Do not use if unable to position the mouthpiece correctly.

SIDE EFFECTS

Use of our mouthpiece may trigger a pharyngeal reflex (laryngeal spasm) in hypersensitive patients, or if it is not placed correctly within the oral cavity. Contact Zyris for additional placement information if needed.

PRECAUTIONS

CAUTION: When performing dental procedures requiring high levels of blood evacuation, it is recommended that our mouthpieces be intermittently flushed with water. This prevents coagulation in the mouthpiece, avoiding loss of suction.

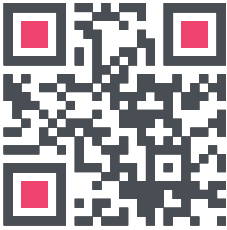
WARNINGS

WARNING: Zyris Isolite® Mouthpieces are single-use only. Reuse can result in the transmission of infectious pathogens. Mouthpieces must be discarded after use. Mouthpieces cannot be safely sterilized after use.

WARNING: Do not use if the individual mouthpiece package has been previously damaged or opened. Non-sterile mouthpieces are individually packaged in polyethylene bags.

WARNING: Be sure to use established protocols and patient monitoring when using our mouthpieces in conjunction with sedation dentistry. Patient management by a certified anesthesiologist is strongly recommended.

Video instructions can be found at:



<https://zyr.is/aa>



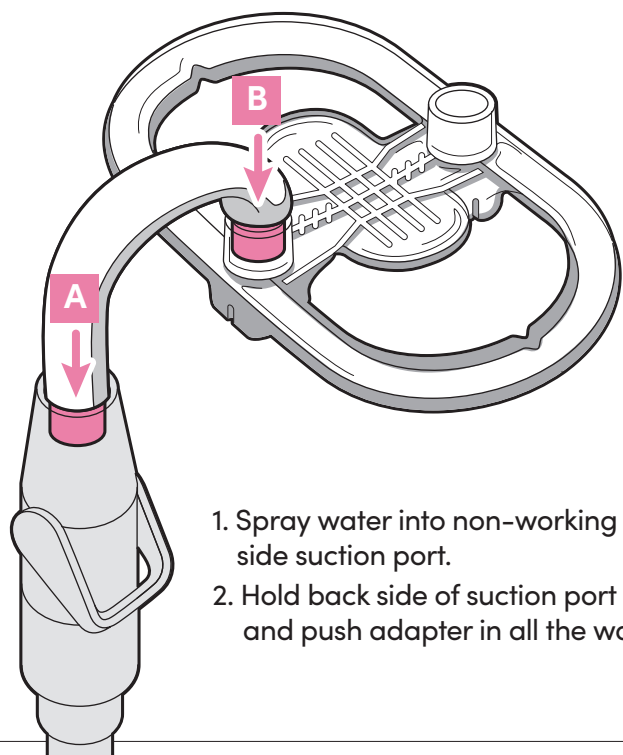
recyclable paperboard

Limited 1-Year Warranty
<https://www.zyris.com/warranty>

1 Mouthpiece Attachment

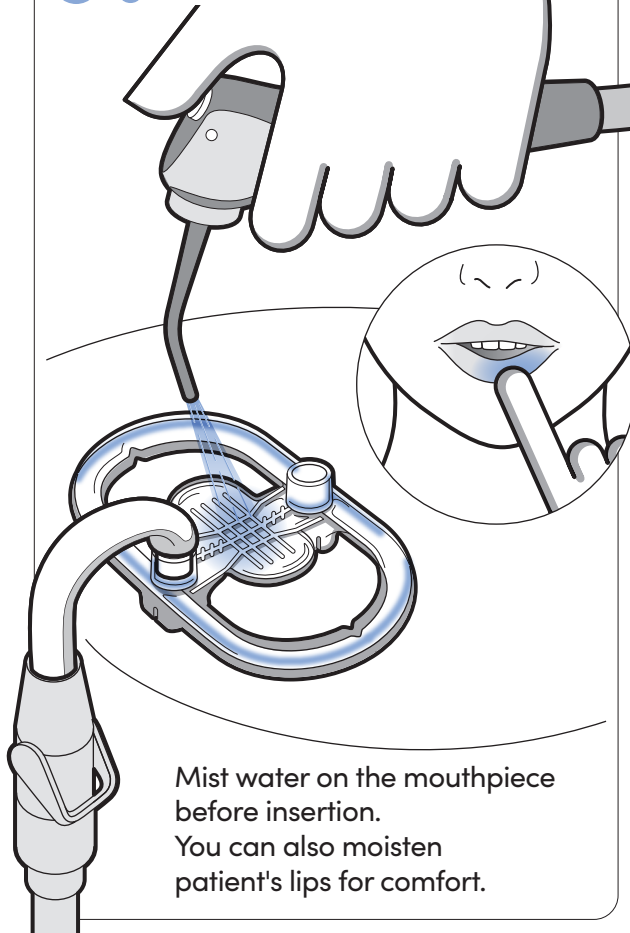
Insert adapter into preferred side of mouthpiece. Press adapter firmly into place.

Tip: Mist mouthpiece opening with water to assist with mouthpiece placement on adapter.



1. Spray water into non-working side suction port.
2. Hold back side of suction port and push adapter in all the way.

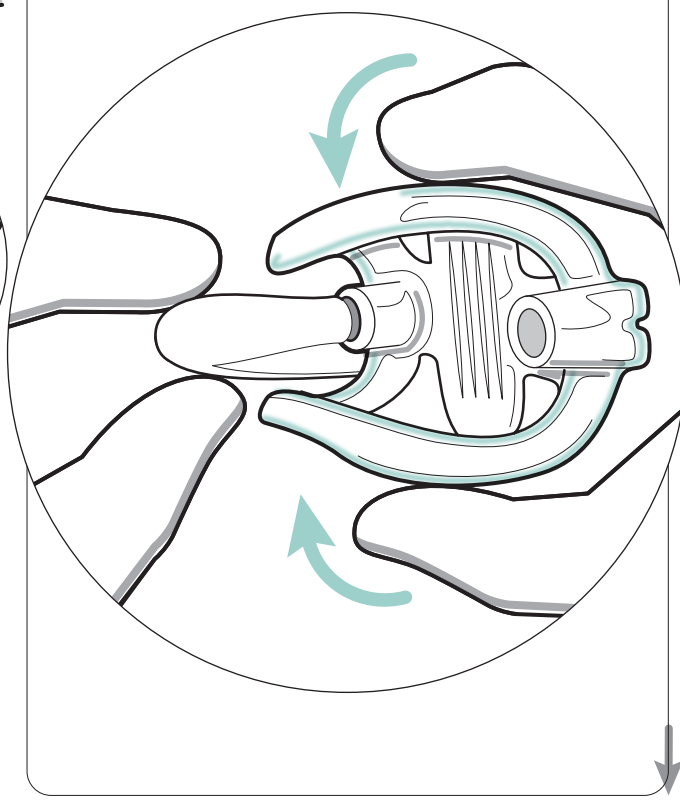
2 Mouthpiece Preparation



Mist water on the mouthpiece before insertion. You can also moisten patient's lips for comfort.

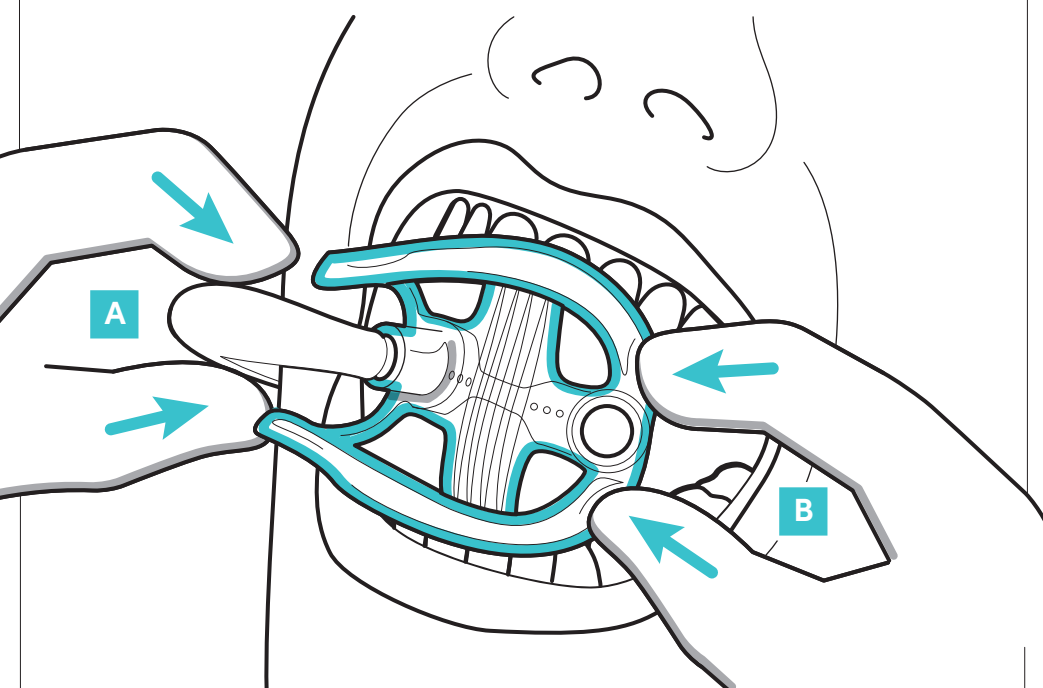
3 Mouthpiece Insertion

Hold device in one hand, and fold mouthpiece with your other hand.



4 Mouthpiece Insertion

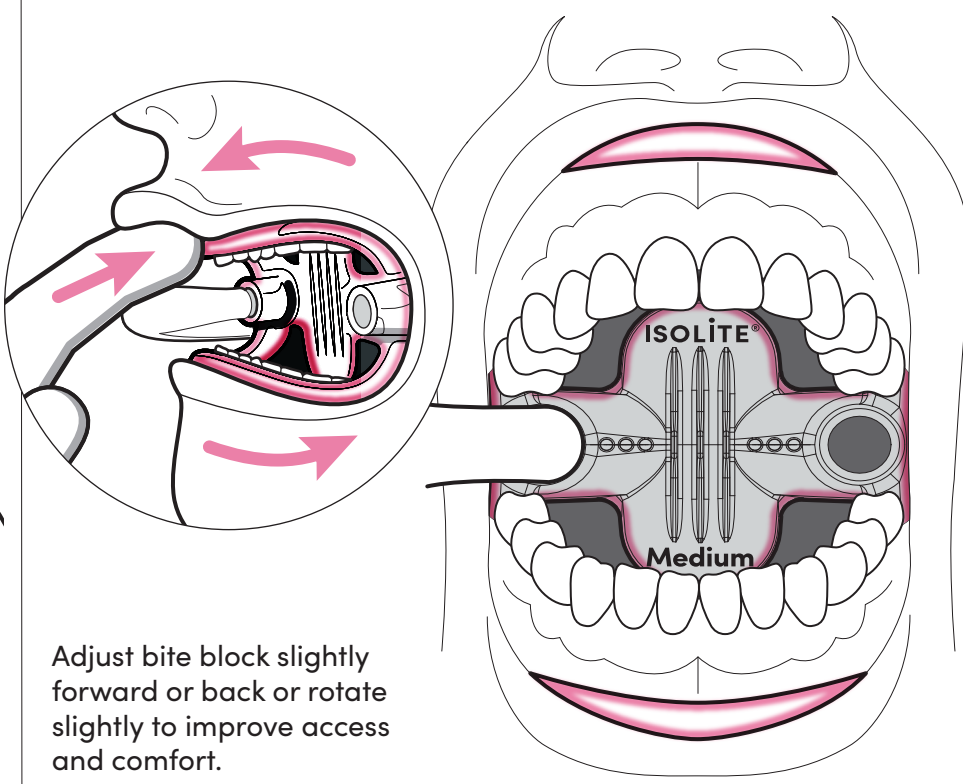
Insert at an angle toward the cheek, by placing one corner of the bite block into the patient's mouth near the patient's first molar.



C Once one side is in, keep mouthpiece compressed and place other side on the first molar.

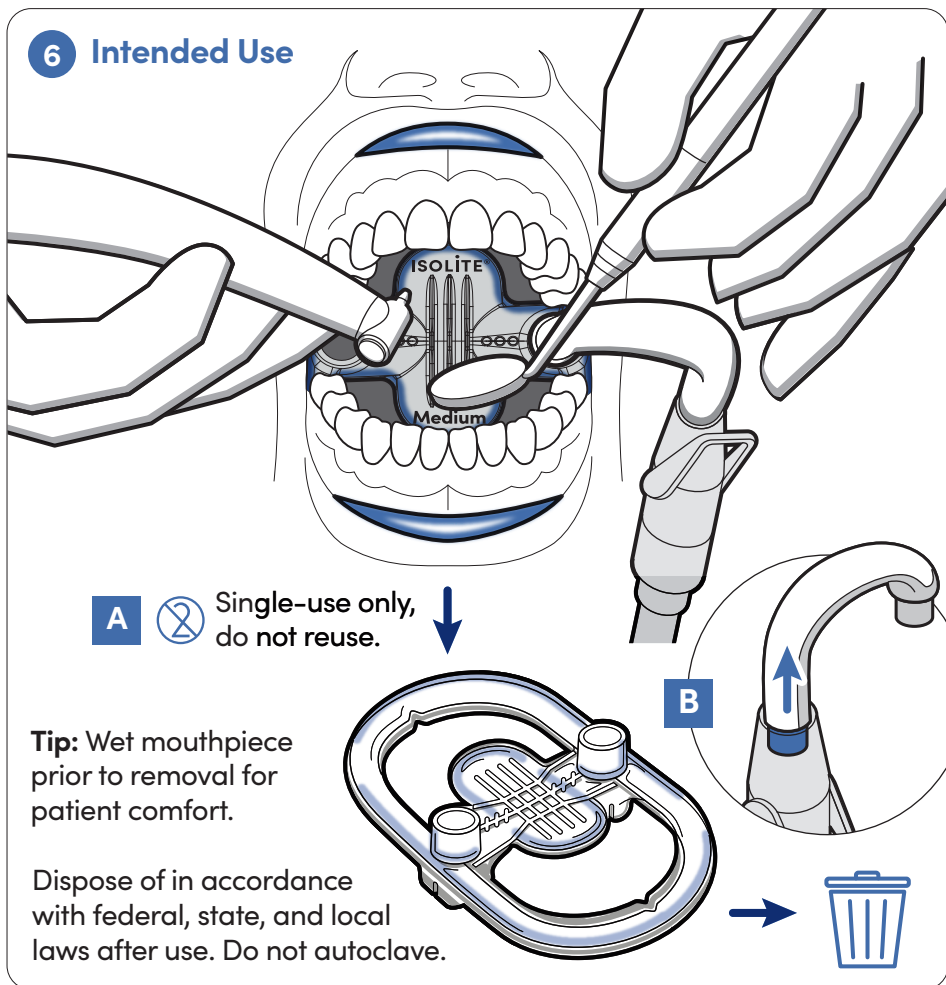
5 Mouthpiece Insertion

Have the patient bite down on bite block to keep in place and using your fingers, sweep around the mouthpiece to secure it in the vestibule.



Adjust bite block slightly forward or back or rotate slightly to improve access and comfort.

6 Intended Use



A Single-use only, do not reuse.

Tip: Wet mouthpiece prior to removal for patient comfort.

Dispose of in accordance with federal, state, and local laws after use. Do not autoclave.

7 Cleaning and Disinfection of Anterior Adapter

Zyris recommends cleaning and autoclaving the anterior adapter after each patient use. Separate adapter into two pieces by pulling apart at the seam as indicated below. Use brush with a pH neutral enzymatic cleaning solution to remove all visible biomatter. Rinse with water and place components in an autoclave pouch. Use validated autoclave cycles.

